

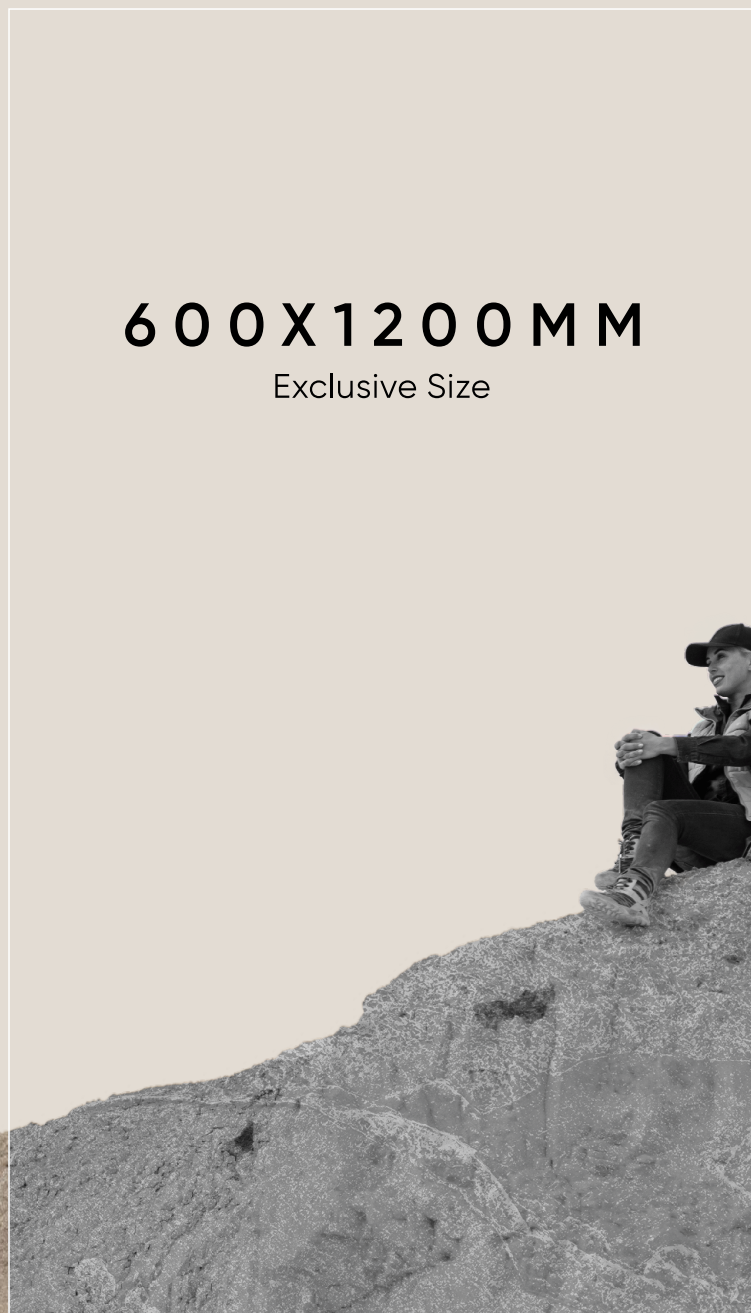


600X1200MM  
2024 MATT CATALOGUE

**Rock** Aura  
SERIES 

**600X1200MM**

Exclusive Size



## Introduction of Armano

---

Armano Vitrified, established in 2016 in Morbi, Gujarat, is a premier Full Body Tiles manufacturer in India. Our commitment to excellence is reflected in our cutting-edge facilities and innovative technology. Catering to discerning architects and designers worldwide, Armano Vitrified offers high-quality tiles for diverse projects. From commercial spaces to residences, our products are designed to meet unique requirements. With a focus on sustainability, we strive to reduce our environmental footprint, making Armano Vitrified the trusted choice for visually stunning and highly functional tiles. Elevate your spaces with Armano – where excellence meets elegance.

## Our Product Collection

Architects, embark on a transformative journey with Armano's RockAura Series—a paradigm shift in Full-Body Tiles. As connoisseurs of design, you understand the profound impact that aesthetics can have on architectural narratives. The RockAura Series allows you to elevate your creations with seven meticulously curated stone-resembling designs, each encapsulating the essence of nature's timeless beauty.'

600x  
1200mm



## Application Areas



INTERIOR



BATHROOM



RESIDENTIAL



COMMERCIAL



HOSPITALS



URBAN  
CENTERS



GYM

**Elevate Every Space**  
with Tile Artistry



# Rock Aura

SERIES

Elevate  
Every Space  
with Tile Artistry



- ABSORB OFF ODOURS
- TEMPERATURE RESISTANCE
- CHEMICAL RESISTANCE
- UV RESISTANCE
- PURE HYGIENE SURFACE
- FIRE RESISTANCE
- SCRATCH RESISTANCE
- FREEZE RESISTANCE

600X1200MM  
Exclusive Size



**Rock** Aura  
SERIES 

**ES**  
ELEGANT STONE  
SURFACE LLP

## MASTERING THE ART OF ELEGANCE

Artistry in Every Tile,

Armano is one of the leading manufactures of ceramic tiles in India. We manufacture a great collection of fullbody tiles that come in various styles and sizes. The surfaces from Armano have a charismatic charm that enhances the aesthetic appeal of a space. These surfaces come in colours that are soothing to the eyes and gives a rich look! Armano keeps growing with the latest trends of interior design and architectural styles. We bring together the combination of creativity and comfort by designing tiles by using the latest technology.





DIGITAL  
FULLBODY



**9**  
DESIGN

**4**  
COLORS

**SINGLE**  
SURFACES



# DIGITAL FULLBODY

## Clean Vitrified Tiles at Home & Make Scratch Proof



1. Clean low-traffic floor tiles at least once a week, and high-traffic areas every one to two days. Use a microfiber cleaning cloth to dust the wall tiles weekly. Dirt particles can damage tiles if they are not cleaned or dusted on a regular basis.



2. Use a commercial tile cleaner formulated especially for tile material. Remember, if the cleaner is concentrated, dilute it before use!



3. Once a week, mop the floor tiles using the prescribed cleaning solution. Wipe the walls tiles with this mixture!



4. Use clear water to rinse the cleaning solution from the tiles. If you leave the mixture on the tiles, it will leave a hazy residue that can spoil the tiles.



5. After cleaning, use a soft towel to dry the tiles. In this way, the water stain formation are prevented.



6. For a more thorough cleaning, mix one cup of vinegar with a bucket of scalding water. Then, wipe the floor with a dry, soft mop soaked in the mix. Allow your floor tiles to dry fully before stepping on them.



7. A floor isn't clean until the grouts are thoroughly cleaned. For cleaning the grouts, you can create a solution with one cup of baking soda mixed with 2 spoons of water. Clean the grouts thoroughly and allow the mix to dry for 5-7 minutes. Thereafter, use a toothbrush or any other soft brush to carefully scrape off the mix from the grout. Finally, clean the surface with a moist towel.

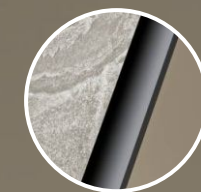


8. Avoid using acids and strong detergent products for cleaning as they can damage the floor tiles and grouts. Also, use soft fiber cloth for cleaning.



### DIGITALLY PRINTED FULLBODYTILES

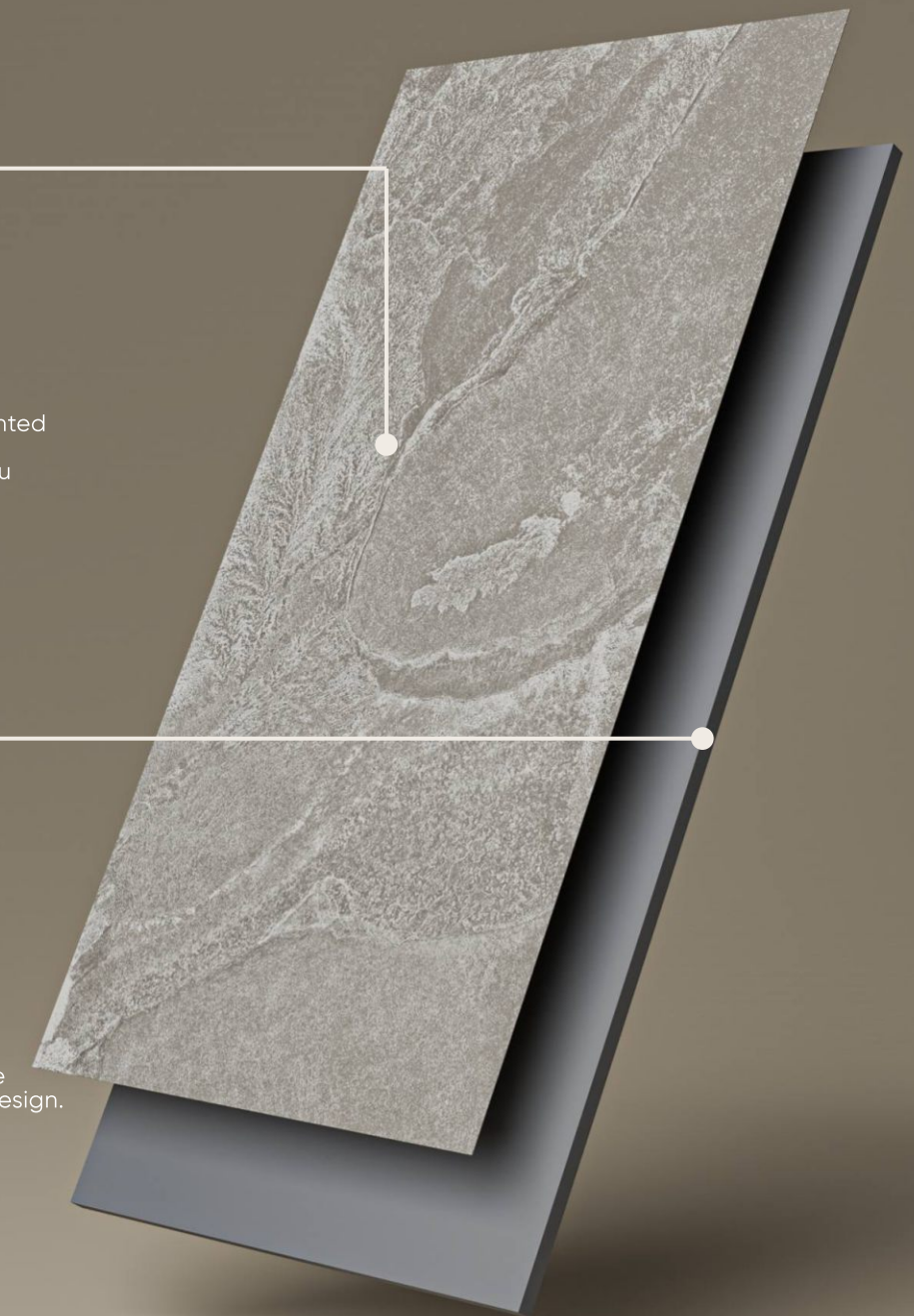
Top Exclusive designs Digitally printed on surface of full body tiles makes Rockaura a style statement for you exteriors as well as interiors.



### DIGITALLY PRINTED FULLBODYTILES

FULL BODY BASE

Tiles are digitally printed, and the body preparation ensures that the base harmoniously matches the design.

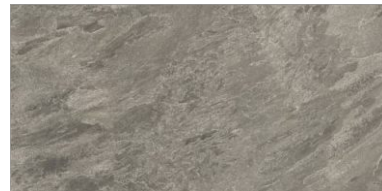


dy



600 x  
1200 MM

Random 4



**BELLSTONE**

Finish **MATT** | Thickness **9MM**



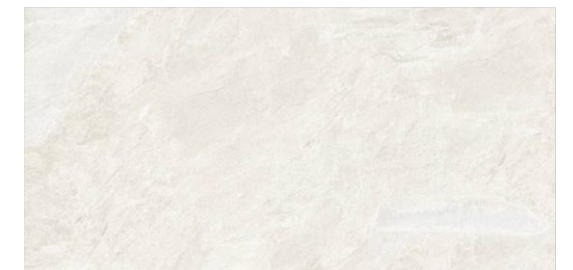
NERO



CON SILK



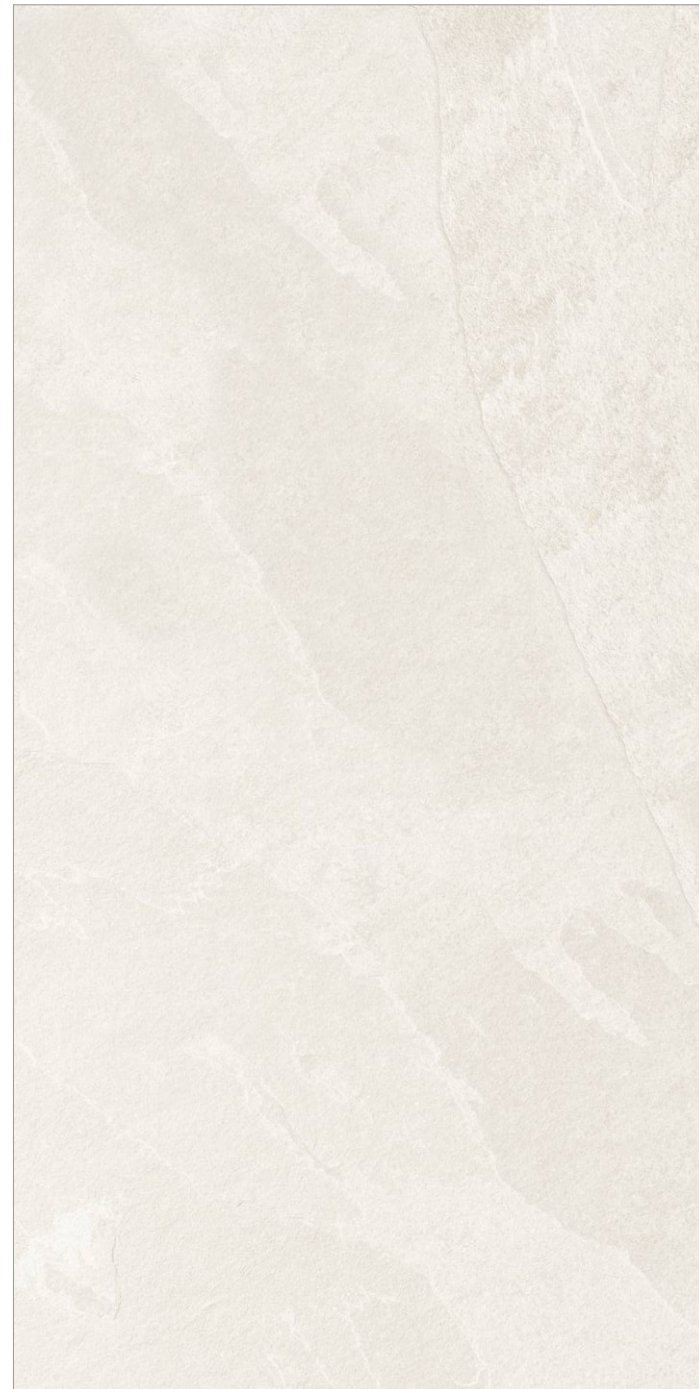
PEACH



SILVER

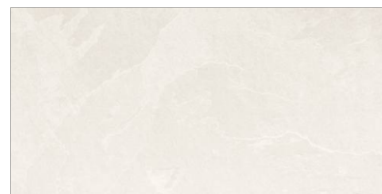
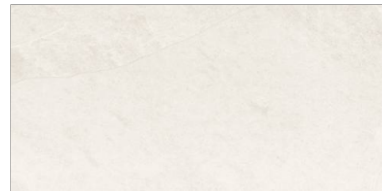
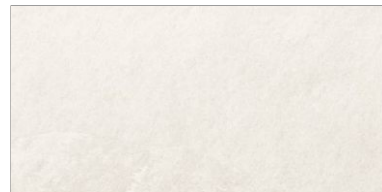


—  
BELLSTONE  
PEACH



600 x  
1200 MM

Random 4



**BLACK SLATE**

Finish **MATT** | Thickness **9MM**



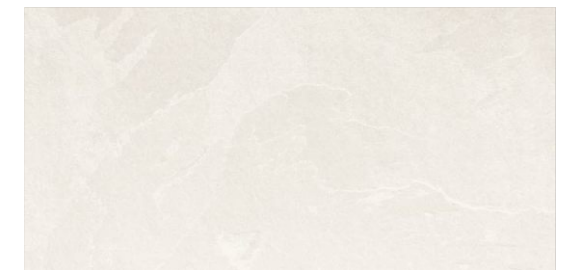
NERO



CON SILK



PEACH



SILVER



—  
BLACK SLATE  
NERO



600 x  
1200 MM

Random 4



DUSK

Finish **MATT** | Thickness **9MM**



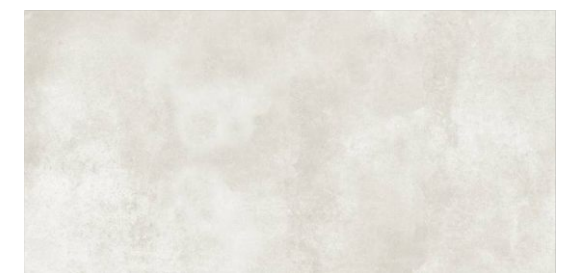
NERO



CON SILK



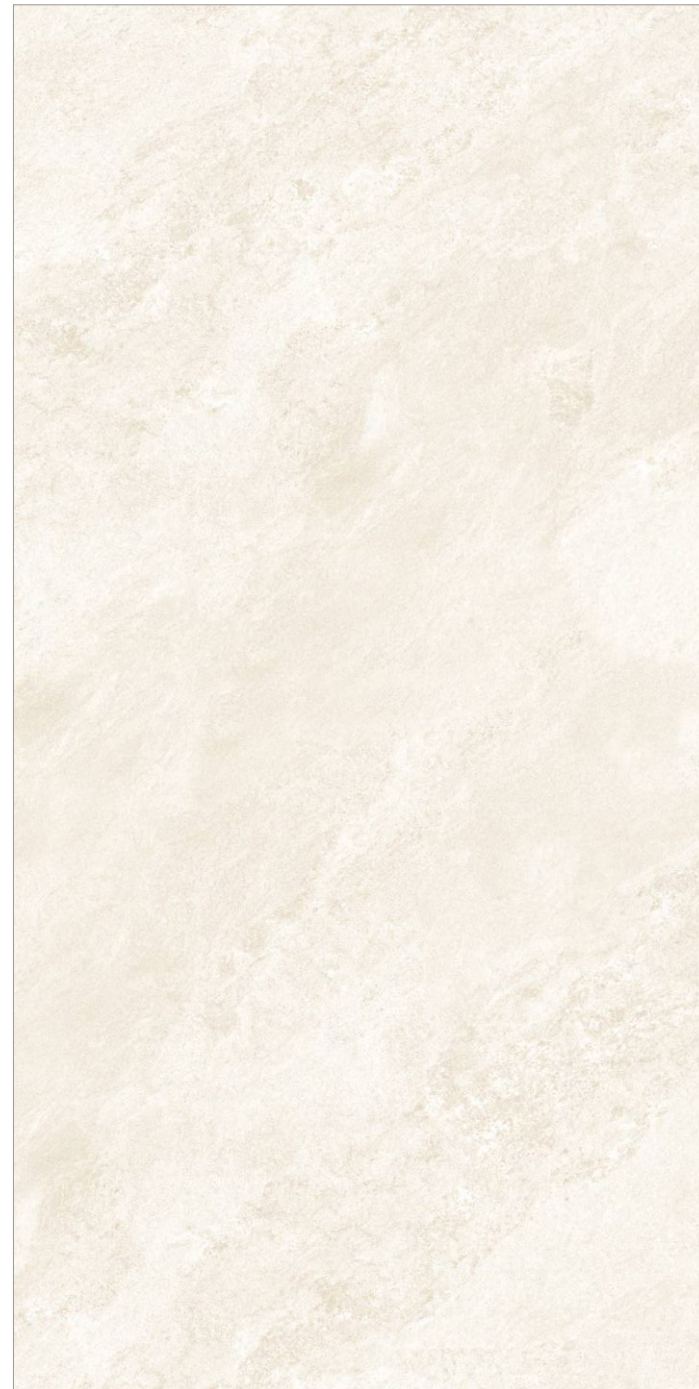
PEACH



SILVER

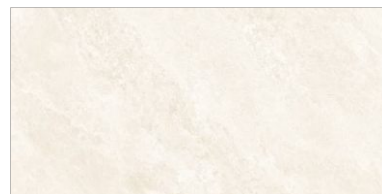
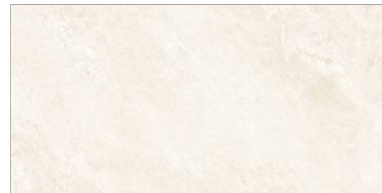
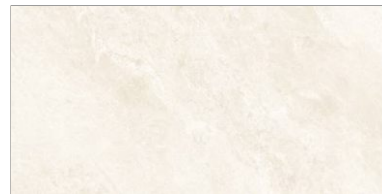
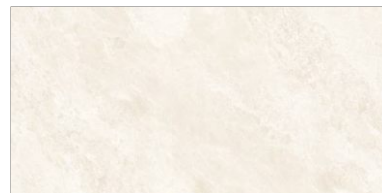


DUSK  
CORNSILK



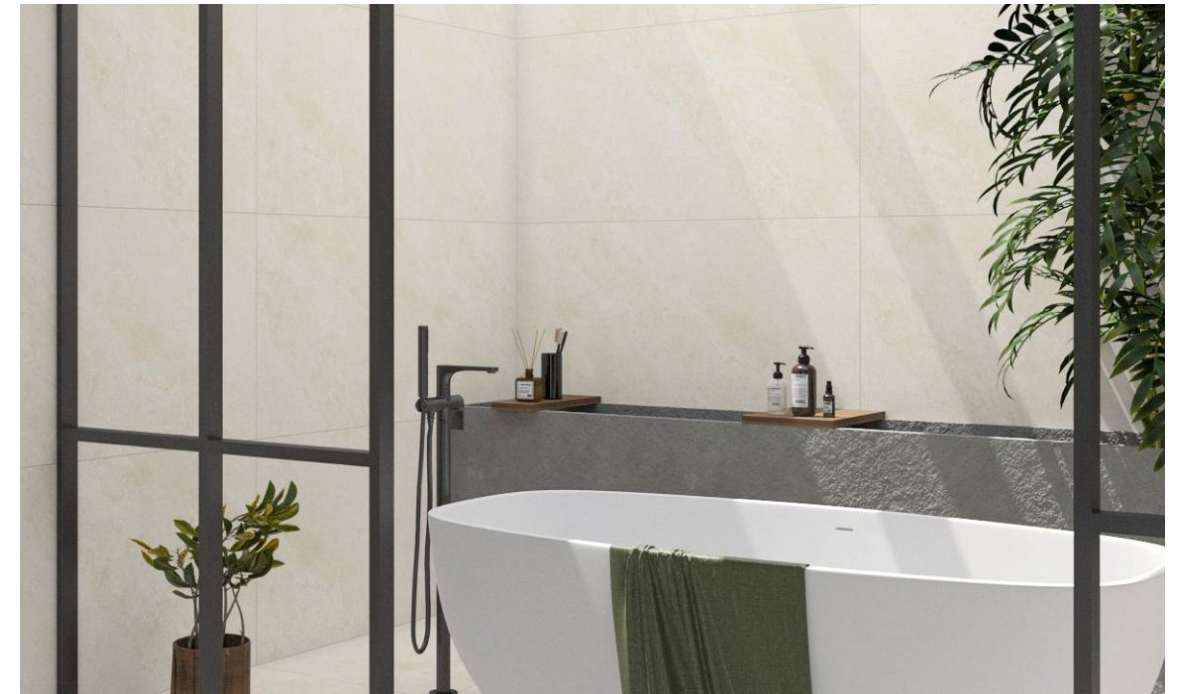
600 x  
1200 MM

Random 4



JUPITER

Finish **MATT** | Thickness **9MM**



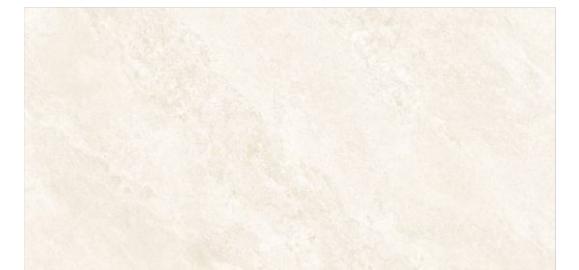
NERO



CON SILK



PEACH



SILVER

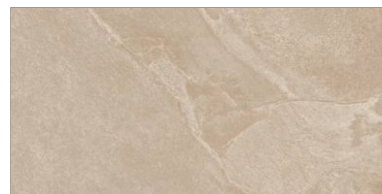


—  
JUPITER  
CORN SILK



600 x  
1200 MM

Random 4



**PYTHON**

Finish **MATT** | Thickness **9MM**



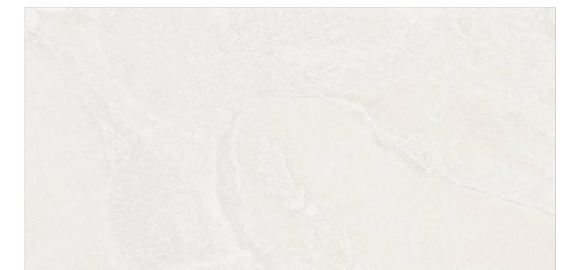
NERO



CON SILK



PEACH



SILVER



—  
PYTHON  
NERO



600 x  
1200 MM

Random 4



SHERPA

Finish **MATT** | Thickness **9MM**



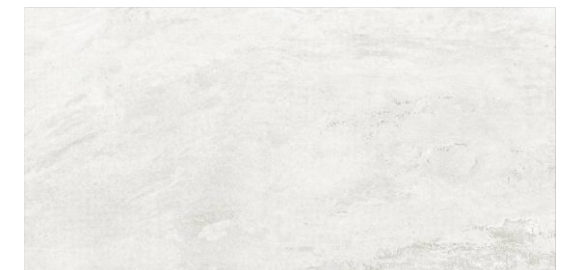
NERO



CON SILK



PEACH



SILVER

---

SHERPA  
CORN SILK



600 x  
1200 MM

Random 4



TRAVERTA

Finish **MATT** | Thickness **9MM**



NERO



CON SILK



PEACH



SILVER



---

TRAVERTA  
TUNDRA CORN SILK

**Rock** Aura  
S E R I E S 



## Transforming Spaces with Every Strike

---

Sandpunch is a digital full-body tile subtle punch, recreating the authentic feel of rock like rough surface. Sandpunch brings the tactile experience of real stone, bringing a touch of nature to your spaces like never before.



## Power up Your Space with Personality

Punch tiles are characterized by their bold and eye-catching designs. They often feature striking patterns, geometric shapes, or intricate motifs that make a strong visual statement.

**Rock** Aura  
SERIES

## BLACK SLATE

Finish **PUNCH** | Thickness **9MM**



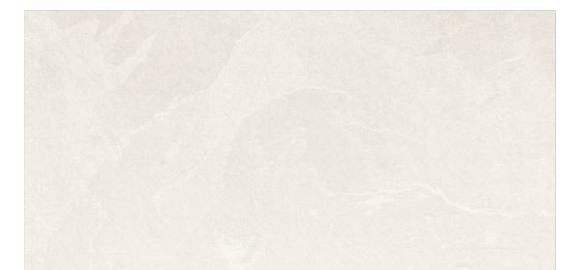
NERO



CON SILK



PEACH



SILVER



---

BLACK SLATE  
CORN SILK



## Infusing Energy into Every Surface

Punch tiles come in range of vibrant colors that add energy and personality to any space. Whether it's a bright red, electric blue, or vivid yellow, these tiles are designed to stand out and command attention.

**Rock** Aura  
SERIES

## BLACK SLATE

Finish **PUNCH** | Thickness **9MM**



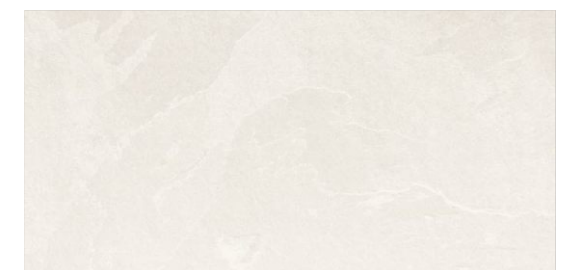
NERO



CON SILK



PEACH



SILVER



—  
BLACK SLATE  
PEACH



## Energize Your Environment with Style

The term "punch" suggests a sense of impact or strength, and punch tiles live up to this expectation by adding a powerful element to interior spaces. They are ideal for creating focal points or accentuating specific areas within a room.

**Rock** Aura  
SERIES

## JUPITER

Finish **PUNCH** | Thickness **9MM**



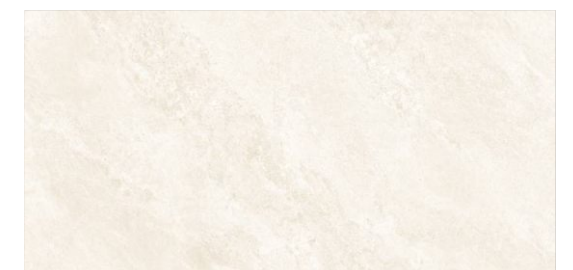
NERO



CON SILK



PEACH



SILVER



—  
JUPITER  
NERO

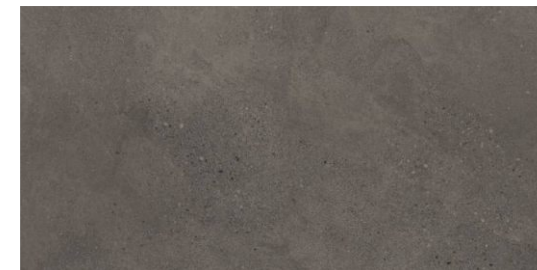
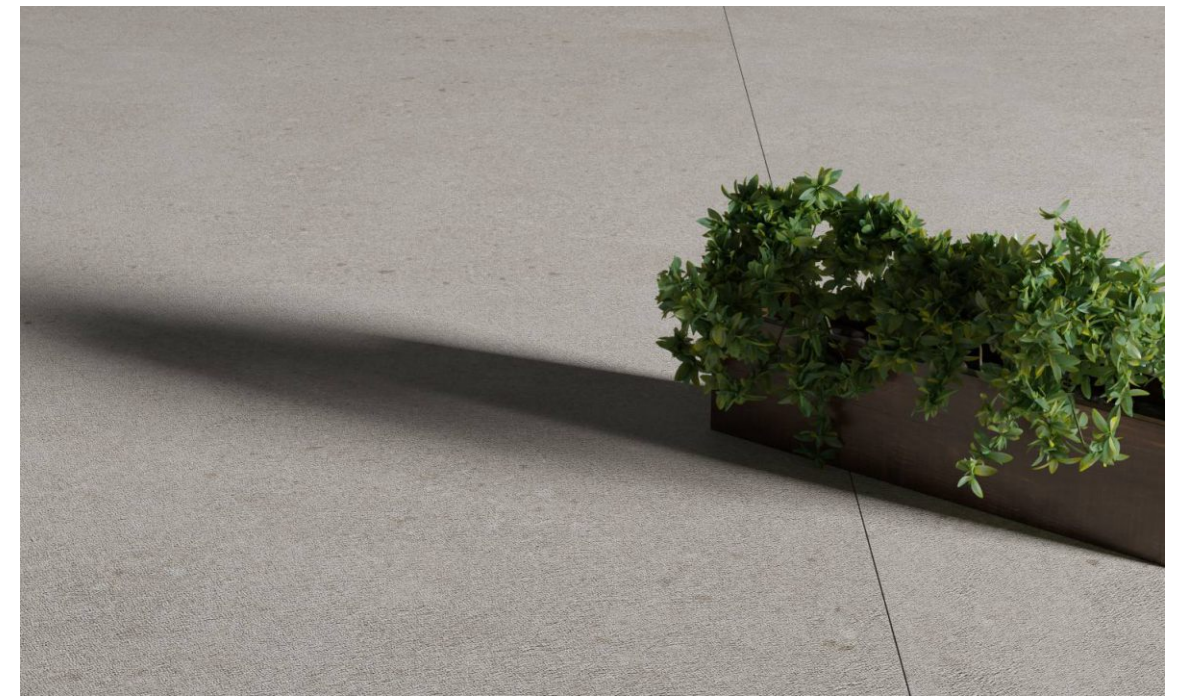


## Where Precision Meets Style

punch tile could refer to different things depending on the context. It might be a term used in construction or interior design. In construction, "punch tile" could refer to a type of tile that is durable and can withstand heavy traffic or impacts.

## PORTOFINO

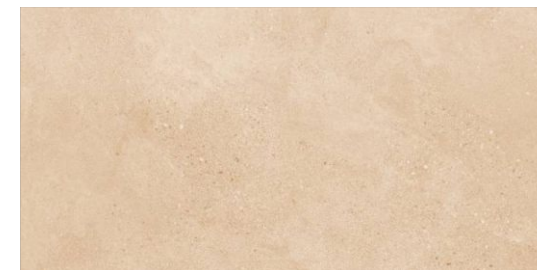
Finish **PUNCH** | Thickness **9MM**



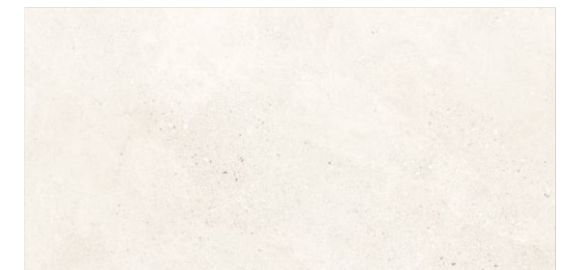
NERO



CON SILK



PEACH



SILVER



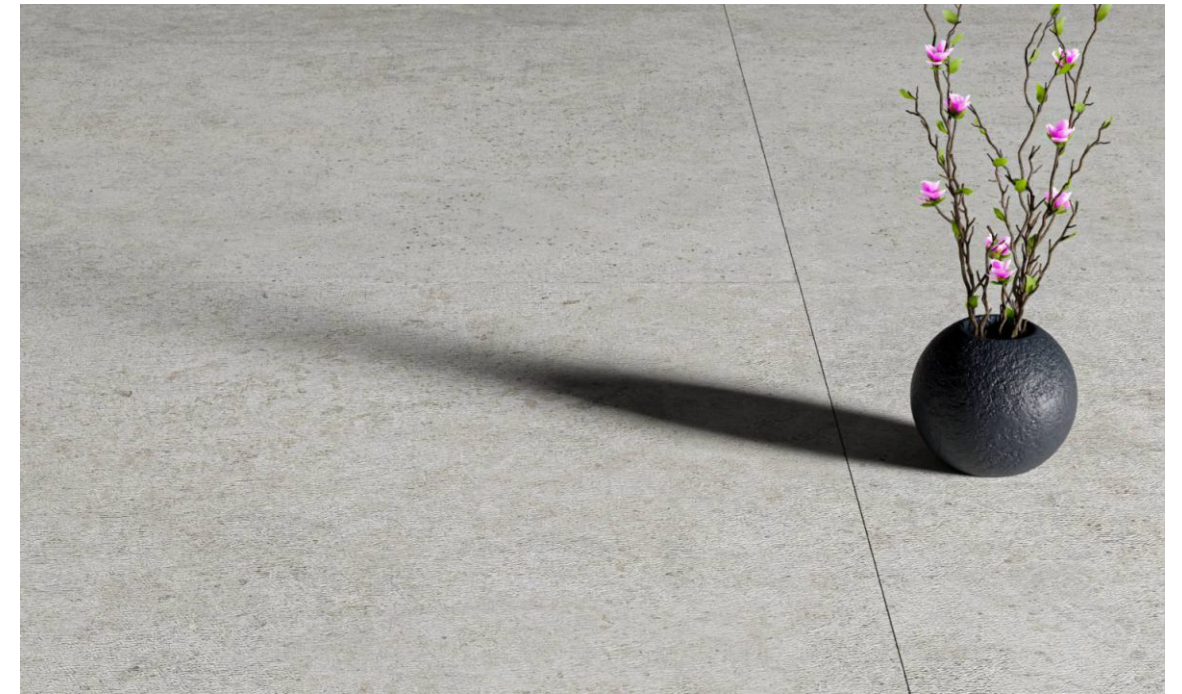
## Strength You Can Stand On.

Such tiles are often used for both interior and exterior applications, offering durability and a natural aesthetic. They can be made from materials like porcelain or ceramic and are suitable for areas like patios, bathrooms, or feature walls.

**Rock** Aura  
SERIES

## PEWTER TRV

Finish **PUNCH** | Thickness **9MM**



CORN SILK



PEACH



SILVER